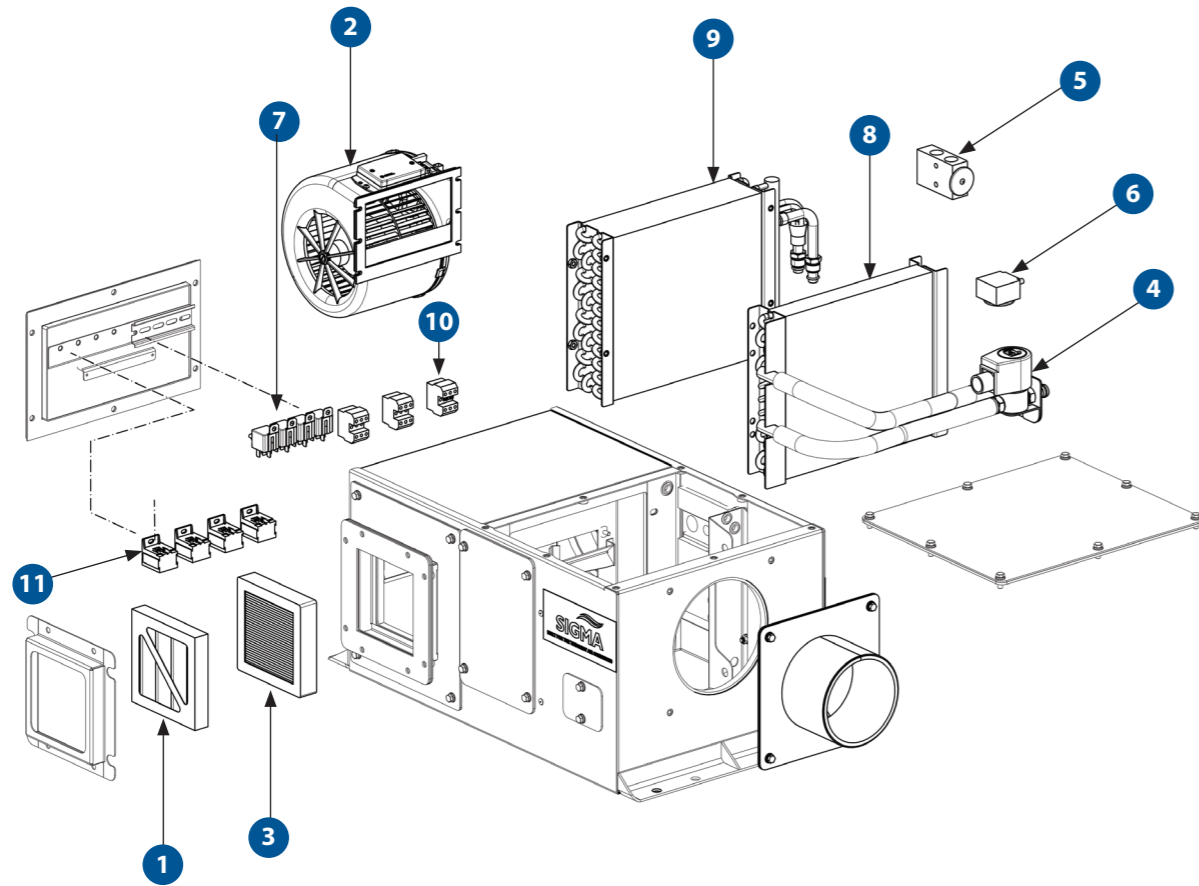


# TFF5

## FLOOR MOUNTED EVAPORATOR

TFF5BX1 | TFF5BX2



## SPARE PARTS

PART NO.	DESCRIPTION	QTY
1	AU4601021 FILTER PLEATED 30/30 130MM X 130MM X 22MM	1
2	AU4301014 FAN DECK	1
3	AU4601020 FILTER HEPA 95% EFF 130MM X 130MM X 27MM	1
4	UE057 SOLENOID VALVE 24VDC 1/4BSP WATER	1
5	H0081856 TX VALVE BLK PARKER 2T R134A	1
6	UE016 THERMOSTAT DEICE STUD	1
7	H0076255 RELAY 24V 40A-DIODE PROTECTED	4
8	AU1301002 HEATER COIL 250MM X 228MM X 33MM 2ROW (TFF5BX1)	1
9	AU1201014 EVAPORATOR COIL 250MM X 228MM X 66MM 4ROW (TFF5BX1)	1
10	AU635300 TERMINAL BLOCK SIE 8WA1011-3DH21	3
11	ERR023 RELAY BASE	1
	H0037067 FILTER - OPTIONAL	1
	AU679519 CONTROLLER ELECTRICAL 24VDC DISPLAY	1
	AU674003 DIODE P600M 1000V 6A	4
	AU635485 END BRACKET KLIPPON EW35 038356	2
	UC020 HOSE CLEAR PVC 12 5MM ID X 3MM W	2

## SPECIFICATIONS

	METRIC	IMPERIAL
<b>Cooling Capacity</b>	4.0 kW	13648 BTU
<b>Heating Capacity</b>	4.0 kW	13648 BTU
<b>Fan Speeds</b>	3	3
<b>Air Flow</b>	100 l/s	212 CFM
<b>Fresh Air</b>	15 l/s	32 CFM
<b>Power Supply</b>	24V	24V
<b>Current Draw</b>	6A	6A
<b>Refrigerant</b>	R134a	R134a
<b>Maximum Ambient Temperature</b>	54°C	129°F
<b>Weight (nominal)</b>	30.0 Kg	66.0 lbs
<b>Technical Manual Reference</b>	SM510-4044	SM510-4044
<b>Dimension (L X W X H)</b>	690mm X 441mm X 295mm	27.2in X 17.4in X 11.6 in

## MAINTENANCE

MONTHLY / 400 HOURS	
<b>AU4601021</b>	FILTER PLEATED 30/30 130 X 130 X 22MM
<b>H0037067</b>	FILTER - OPTIONAL
ANNUAL / 4,800 HOURS	
<b>AU4301014</b>	FAN DECK
<b>AU4601020</b>	FILTER HEPA 95% EFF 130MM X 130MM X 27MM
3 YEARS / 14,400 HOURS	
<b>UE057</b>	SOLENOID VALVE 24VDC 1/4BSP WATER
<b>H0081856</b>	TX VALVE BLK PARKER 2T R134A
<b>UE016</b>	THERMOSTAT DEICE STUD
<b>H0076255</b>	RELAY 24V 40A-DIODE PROTECTED
<b>AU679519</b>	CONTROLLER ELECTRICAL 24VDC DISPLAY

Please contact SIGMA for more information including details on an overhaul scope and interval. Maintenance periods and scope are dependent on application and site conditions, and are to be used as a guide.

## COMPANION ITEMS

PART NO.	DESCRIPTION
<b>TCW5BX1</b>	Electric Condenser
<b>TCW5BX2</b>	Electric Condenser
<b>EB9P4X</b>	Pressuriser
<b>HDC150</b>	Hydraulic Compressor
<b>AU2961001</b>	Electric Compressor
<b>AU270311</b>	Engine Driven Compressor
<b>AU270312</b>	Engine Driven Compressor
<b>H0081855</b>	Receiver Drier
<b>KNHV90043</b>	TX Valve Fitting Kit
<b>KNHV90044</b>	R/A Box Duct Kit
<b>AU531422</b>	Receiver Drier
<b>H0023631</b>	Return Air Box - 6
<b>AS4044301</b>	Return Air Duct - 5

