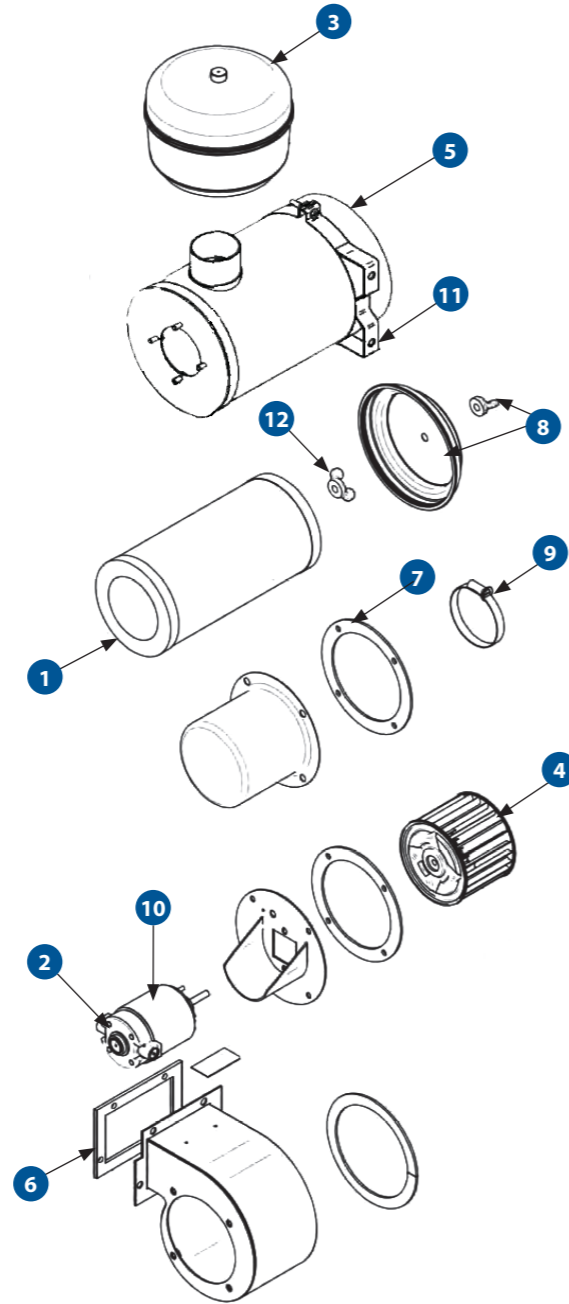




FVV50B

FRESH AIR PRESSURISER UNIT

FVV50B3 | FVV50B4



SPARE PARTS

PART NO.	DESCRIPTION	QTY
1	AU460706 FILTER ASSEMBLY ROUND 133MM - STANDARD AU460080 FILTER CARTRIDGE ENDURANCE - OPTIONAL	1 1
2	AU320028 MOTOR BRUSH KIT - ASSEMBLY + HOLDER	1
3	AU460725 FILTER PRE-CLEANER 186MM - STANDARD	1
4	AU410605 BLOWER WHEEL (FVV50B3) AU410337 BLOWER WHEEL (FVV50B4)	1 1
5	AM184935 FRESH AIR CANISTER ASSEMBLY (FVV50B3)	1
6	AU861071 SEAL FRESH AIR 153MM X 160MM	1
7	AU861072 GASKET FRESH AIR FAN 160MM	2
8	AU460709 FILTER END CAP (SUPPLIED WITH WINGNUT)	1
9	AU553626 CLAMP	1
10	AU320C007 MOTOR 24V SS	1
11	AU870001 MOUNTING BAND AIR CLEANER 6.5"	1
12	AU460721 WINGNUT	1
	AU460964 PRE-CLEANER TS 2.5" INLET SMALL (OPTIONAL)	1

SPECIFICATIONS

	METRIC	IMPERIAL
Fan Speeds	1	1
Air Flow	30 l/s	64 CFM
Power Supply	24VDC	24VDC
Current Draw	3.0 A	3.0 A
Weight (nominal)	20.0 Kg	44.0 lbs
Dimension L X W X H	550mm X 200mm X 357 mm	21.7in X 7.9in X 14.1in

MAINTENANCE

MONTHLY / 300 HOURS	
AU460706	FILTER ASSEMBLY ROUND 133MM (STANDARD)
AU460080	FILTER CARTRIDGE ENDURANCE (UPGRADE)
AU320028	MOTOR BRUSH KIT - ASSEMBLY + HOLDER
ANNUAL / 3,600 HOURS	
AU320C007	MOTOR 24V 2500 RPM
3 YEARS / 10,800 HOURS	
AU460725	FILTER PRE-CLEANER 186MM (STANDARD)
AU460964	PRE-CLEANER TS 2.5" INLET SMALL (OPTIONAL)
AU410605	BLOWER WHEEL (FVV50B3)
AU410337	BLOWER WHEEL (FVV50B4)

Please contact SIGMA for more information including details on an overhaul scope and interval. Maintenance periods and scope are dependent on application and site conditions, and are to be used as a guide.

- DRAGLINE & SHOVEL
- DRILL
- EXCAVATOR
- DOZER
- TRUCK
- WHEEL LOADER
- CONSTRUCTION
- UNDERGROUND EQUIPMENT
- INDUSTRIAL
- SMELTERS
- RAIL SPECIAL VEHICLES